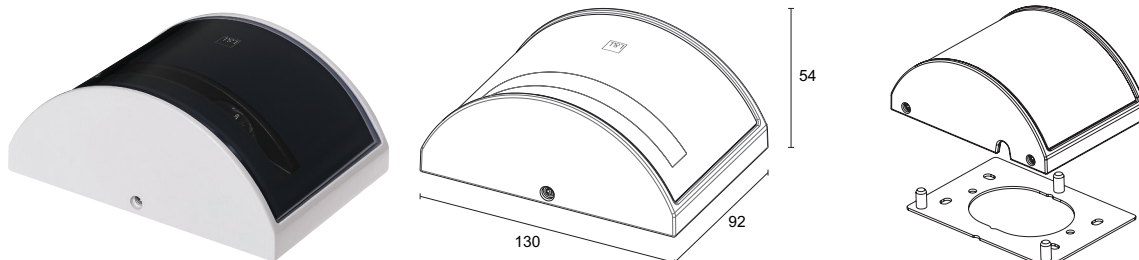
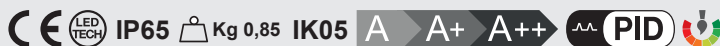




Lyss 1.0

Projectors / Proiettori



Lyss 1.0

Plate can be adjusted by 5° to align the light beam on the window frame
Piastra regolabile di 5° per l'allineamento del fascio luminoso sulla cornice della finestra

DESCRIPTION

Projector for outdoor applications; surface mounted (windowsill, arch); body in die-cast aluminium alloy EN AB 47100, screen in serigraphed glass; finishes: anthracite, white, cor-ten, grey, RAL on request; 2 power LEDs; 5W, 9W - 230Vac; built in power supply unit; includes 1,5 m neoprene cable, H05RN-F 3x1,0 Ø7 mm; lumen output at source: 369 lm (3000K, 5W), 603 lm (3000K, 9W); total delivered lumens: 96 lm (3000K, 5W), 169 lm (3000K, 9W); optics: clear 10°x180°, frosted 20°x180°; LED colour: white - 2700K, 3000K, 4000K; blue; ingress protection: IP65; impact resistance: IK05; operating temperature: -20°C +45°C; max luminaire temperature: 45°C (Ta 25°C); photobiological safety: risk group 1 in accordance with EN62471:2006; appliance class: I; weight 0,85 kg; dimensions 130x92x54 mm; accessories: optional outer casing WC0301, connection housing WD0500E / WD0500F / WD0500T / WD0500H.

DESCRIZIONE

Proiettore da esterno; su superficie (davanzale, arco); corpo in alluminio pressofuso lega EN AB 47100, schermo in vetro serigrafato; finiture: antracite, bianco, cor-ten, grigio, RAL previa richiesta; 2 power LED; 5W, 9W - 230Vac; alimentatore integrato; incluso cavo in neoprene di 1,5 m H05RN-F 3x1,0 Ø7 mm; flusso sorgente: 369 lm (3000K, 5W), 603 lm (3000K, 9W); flusso totale: 96 lm (3000K, 5W), 169 lm (3000K, 9W); ottica: trasparente 10°x180°, satinata 20°x180°; colore LED: bianco - 2700K, 3000K, 4000K; blu; grado di protezione: IP65; grado di resistenza: IK05; temperatura di esercizio: -20°C +45°C; temperatura max apparecchio: 45°C (Ta 25°C); sicurezza fotobiologica: gruppo rischio 1 secondo EN62471:2006; classe di isolamento I; peso 0,85 kg; dimensioni 130x92x54 mm; accessori: cassaforma opzionale WC0301, contenitore per connessioni WD0500E / WD0500F / WD0500T / WD0500H.

ELECTRICAL FEATURES / CARATTERISTICHE ELETTRICHE

Power consumption <i>Potenza assorbita</i>	5W; 9W
Power supply <i>Alimentazione</i>	230Vac 50Hz
Power supply unit <i>Alimentatore</i>	built in <i>integrato</i>
Dimming <i>Dimmerazione</i>	not available <i>non disponibile</i>
Connection <i>Collegamento</i>	230Vac 50Hz

LIGHTING FEATURES / CARATTERISTICHE ILLUMINOTECNICHE

No. and type of LED / <i>N° e tipo di LED</i>	2 power LEDs
Average LED life / <i>Duratura media LED</i>	80% after 50.000 h
LED colour <i>Colore LED</i>	white: 2700K, 3000K, 4000K, blue <i>bianco: 2700K, 3000K, 4000K, blu</i>
CRI <i>Indice resa cromatica CRI</i>	>80
Binning <i>Selezione</i>	1/4 ANSI BIN
Optics <i>Ottiche</i>	semicircular light output: clear 10°x180°, frosted 20°x180° <i>lama di luce semicircolare: trasparente 10°x180°, satinata 20°x180°</i>
Lumen output at source <i>Flusso sorgente</i>	369 lm (3000K, 5W), 603 lm (3000K, 9W)
Total delivered lumens <i>Flusso totale apparecchio</i>	96 lm (3000K, 5W), 169 lm (3000K, 9W)

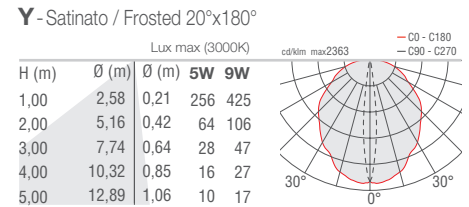
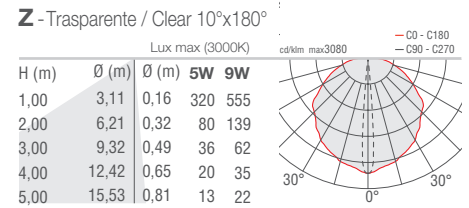
MECHANICAL FEATURES / CARATTERISTICHE MECCANICHE

Dimensions / <i>Dimensioni</i>	130x92x54 mm
Weight / <i>Peso</i>	0,85 kg
Finishes <i>Finiture</i>	anthracite, white, cor-ten, grey, RAL on request <i>antracite, bianco, cor-ten, grigio, RAL previa richiesta</i>
Installation <i>Fissaggio</i>	with fixing adjustable plate (+5°) <i>con piastra di fissaggio regolabile (+5°)</i>
Body material <i>Materiale corpo</i>	die-cast aluminium alloy EN AB 47100 <i>alluminio pressofuso lega EN AB 47100</i>
Screen material <i>Materiale schermo</i>	serigraphed glass <i>vetro serigrafato</i>

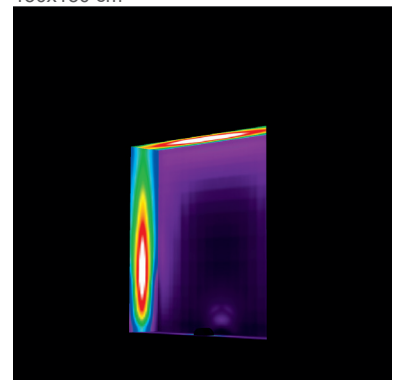
GENERAL FEATURES / CARATTERISTICHE GENERALI

Operating temperature / <i>Temperatura di esercizio</i>	from -20 °C to +45 °C
Ingress protection / <i>Grado di protezione</i>	IP65
Impact resistance / <i>Grado di resistenza</i>	IK05
Energy efficiency class <i>Classe di consumo energetico</i>	A/A+/A++ (built-in LED lamps) in accordance with EU 874/2012 <i>A/A+/A++ (modulo LED integrato) in accordo con UE 874/2012</i>
Glow wire test / <i>Glow wire test</i>	960°
Max luminaire temperature <i>Temperatura max apparecchio</i>	40°C (Ta 25°C)
Insulation class / <i>Classe isolamento</i>	class I / <i>classe I</i>
Walkover / <i>Calpestabile</i>	no
Drive-over / <i>Carrabile</i>	no
Power cables <i>Cavi di alimentazione</i>	includes 1,5 m neoprene cable, H05RN-F 3x1,0 Ø7 mm <i>incluso cavo in neoprene di 1,5 m H05RN-F 3x1,0 Ø7 mm</i>
Standard safety <i>Sicurezza standard</i>	PID (Protective Impedance Device) <i>PID (Impedenza di protezione)</i>
Photobiological safety <i>Sicurezza fotobiologica</i>	risk group 1 in accordance with EN62471:2006 <i>gruppo rischio 1 secondo EN62471:2006</i>

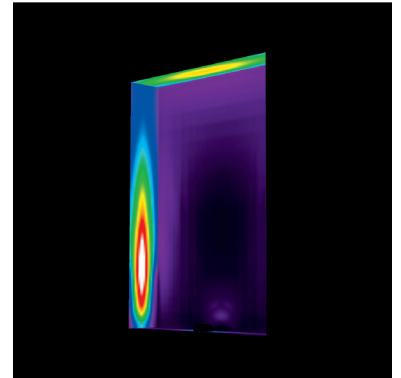
**PHOTOMETRIC DATA
DATI FOTOMETRICI**



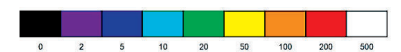
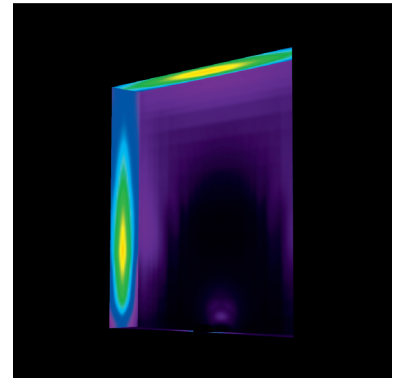
150x150 cm



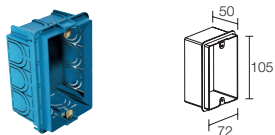
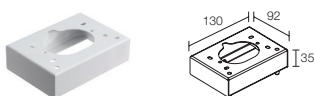
150x200 cm



200x200 cm



Lighting levels with 9W: false colours, clear optics 10°x180°
Illuminamento 9W: colori falsati, ottica trasparente 10°x180°

For installation / Per installazione**WC0301**Optional outer casing / *Cassaforma opzionale***WD0500E** - White / Bianco**WD0500F** - Grey / Grigio**WD0500H** - Anthracite / Antracite**WD0500T** - Cor-tenConnection housing / *Contenitore per connessioni*

L&L Luce&Light SRL reserves the right to change the information contained in this document at any time without prior notice being given.
Le informazioni contenute nel presente documento possono essere modificate in qualsiasi momento senza preavviso e non comportano l'assunzione, nemmeno implicita, di alcuna obbligazione da parte della L&L Luce&Light srl.