

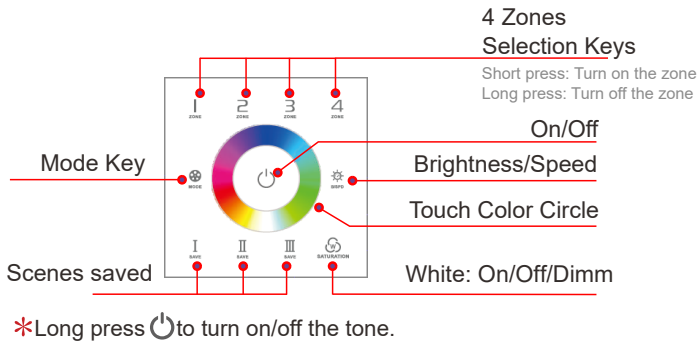


Technical specs:

TOUCH 03L1 RGBW Touch Panel - 4 zones

Input Voltage: 100~240Vac
 Output Signal: DMX512 (4 zones)
 Working Temp.: -30°C ~55°C
 Dimensions: L86×W86×H36(mm)
 Weight(G.W.): 225g

Functions:



Changing Mode Key

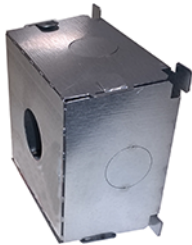
1. Static Red
2. Static Green
3. Static Blue
4. Static Yellow
5. Static Purple
6. Static Cyan
7. Static White
8. RGB Jumping
9. 7 Colors Jumping
10. RGB Smooth
11. Full Colors Smooth
12. Static dark

DMX512 addresses:

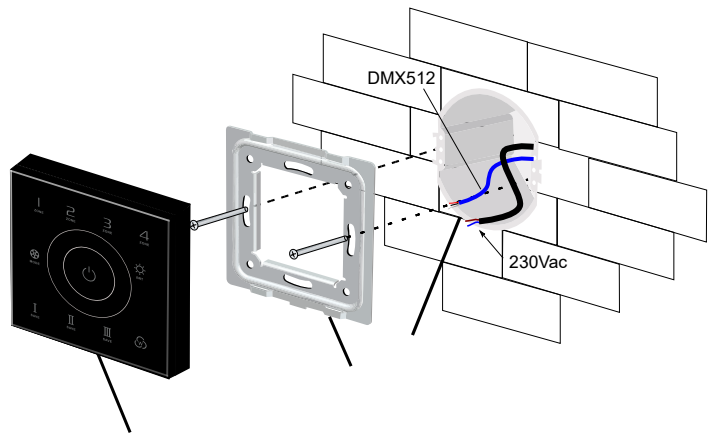
- Zone 1: adrss 1/2/3/4
 Zone 2: adrss 5/6/7/8
 Zone 3: adrss 9/10/11/12
 Zone 4: adrss 13/14/15/16

Installation Instruction:

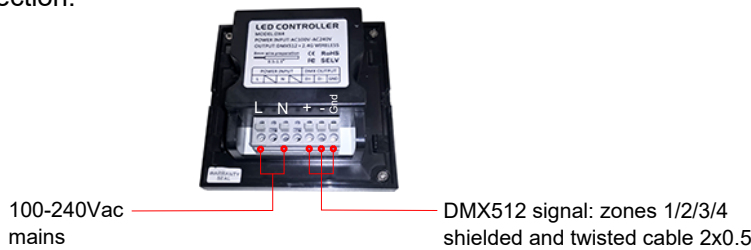
90x90x50 mm



compulsory outercasing WC0302



Connection:



Install

Uninstall

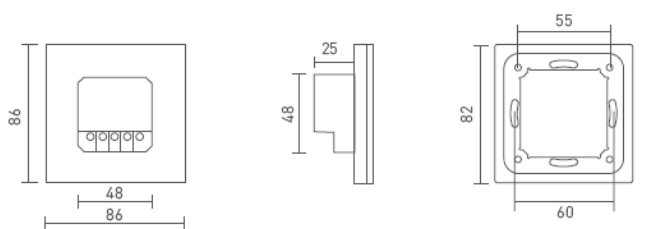


Dati tecnici:

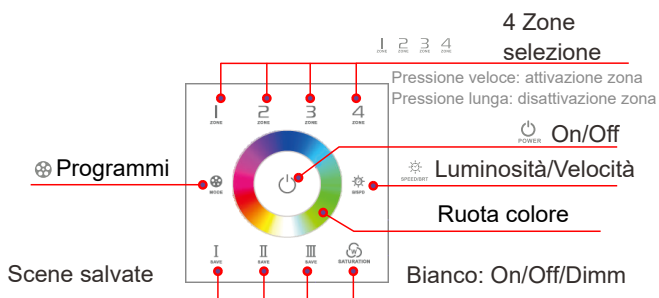
TOUCH 03L1 RGBW Touch Panel - 4 zone

Input: 100~240Vac
 Segnale uscita: DMX512 (4 zone)
 Temp.funzionamento: -30°C ~55°C
 Dimensioni: L86xW86xH36(mm)
 Peso: 225g

TOUCH 03L1 UNIT mm



Funzioni:



* Pressione prolungata per spegnere i toni pulsante

Programmi:

1. Rosso
2. Verde
3. Blue
4. Giallo
5. Rosa
6. Ciano
7. Bianco R+G+B
8. RGB Jumping
9. Cambio 7 colori a salto
10. Variazione RGB morbida
11. Cambio colori morbido
12. Nero (R+G+B spenti)

Indirizzi DMX512:

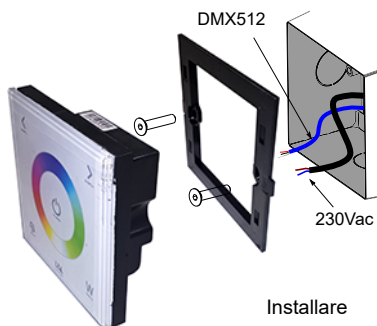
- Zona 1: adrss 1/2/3/4
 Zona 2: adrss 5/6/7/8
 Zona 3: adrss 9/10/11/12
 Zona 4: adrss 13/14/15/16

Installazione:

90x90x50 mm



cassaforma obbligatoria
WC0302



Installare



Disinstallare

Connessione:



100-240Vac
Alimentazione

Segnale DMX512: zona 1/2/3/4
usare cavo schermato 2x0.5