

Made in Italy

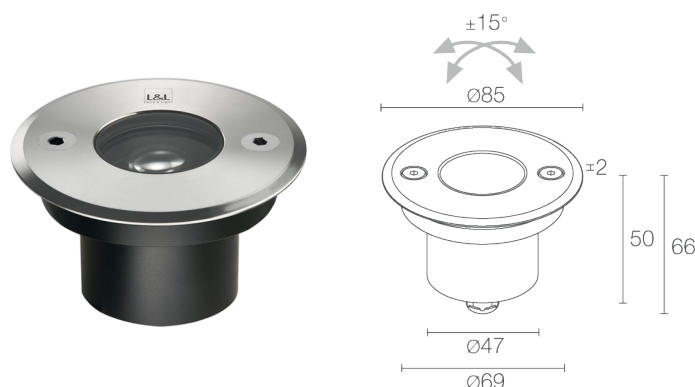


Bright 2.8, code: CB280105LF

Recessed for outdoor applications

CE UK CA CB EAC 8 LED TECH III U kg 2000 - kN 20 kg 0,40 - kg 0,50 IP65 IP68 IP69

IK10 IPS T max 55°C A F



DESCRIPTION

recessed for outdoor applications (not suitable for use in immersion in swimming pools or fountains); drive-over up to 2000 kg; recessed (ceiling, wall, floor); Power consumption: 3,5W; Power supply: 24Vdc; Lumen output at source: 184 lm (3000K, 3.5W); Delivered lumen output: 143 lm (3000K, 20°, 3.5W); 1 power LED, 1/4 ANSI BIN, 50 000h L90 B10 (Ta 25°C); LED colour: 3000K; Optics: 41° tilttable ±15°; CRI Colour Rendering Index: 80; Body material: body in black-anodized anticorodal aluminium, trim in aluminium; Finishes: grey (RAL 9006); Screen material: screen in tempered, transparent extra-clear glass; Thickness of installation surface: min 0 mm, max 25 mm; power supply unit not included; includes 1.5 m neoprene cable H05RN-F 2x0.75/0.75 Ø6.3 mm; Ingress protection: IP65, IP68, IP69; Impact resistance: IK10; version with LED colour 2200K and honeycomb louvre available on request; Casambi control using the Casambi app with dedicated electronics; Protection systems: IPS (Intelligent Protection System) protects lighting fixtures from water infiltrations, which can occur if there are faulty junctions between the cables in outdoor or underwater applications. This innovation, patented by L&L, also guarantees electrical protection against polarity reversal, hot plugging, ESD and power surges, which can occur if there are faults in the electrical circuit; Operating temperature: -20°C — +45°C; Maximum device temperature: 55°C (Ta 25°C); Glow wire test: 960°C; Photobiological safety: in accordance with IEC TR 62778:2014; Appliance class: class III; Weight: stainless steel trim: 500 g, aluminium trim: 400 g; Dimensions: Ø85x66 mm; Cutout dimensions: Ø70 mm; Volume of thermal heatsink: Ø180x120 mm; Energy efficiency class: F (light source) in accordance with EU 2019/2015; Accessories: WC0100 Outer casing, WC0103 Outer casing, WC0150 Outer casing, WE0400S Anti-glare screen, half transparent and half serigraphed black, WG0100 Retaining spring clip Ø70mm; tested and approved via E.O.L. (End Of Line) test with functioning test and check of electrical power consumption

Status: Available

14/07/2025 Rev. 13/2024

ELECTRICAL CHARACTERISTICS

Power consumption	3,5W
Power supply	24Vdc
Power supply unit	power supply unit not included

LIGHTING CHARACTERISTICS

Number and type of LED	1 power LED
Average LED life	50 000h L90 B10 (Ta 25°C)
LED colour	3000K
CRI Colour Rendering Index	80
Binning	1/4 ANSI BIN
Optics	41° tiltable ±15°
Lumen output at source	184 lm (3000K, 3.5W)
Delivered lumen output	143 lm (3000K, 20°, 3.5W)

MECHANICAL CHARACTERISTICS

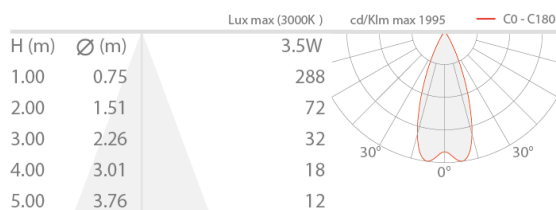
Dimensions	Ø85x66 mm
Weight	stainless steel trim: 500 g, aluminium trim: 400 g
Finishes	grey RAL 9006
Mounting	with fixing springs or outer casing
Body material	body in black-anodized anticorodal aluminium, trim in aluminium
Screen material	screen in transparent, tempered extra-clear glass
Cutout dimensions	Ø70 mm
Volume of thermal heatsink	Ø180x120 mm

GENERAL CHARACTERISTICS

Ingress protection	IP65, IP68, IP69
Operating temperature	-20°C — +45°C
Impact resistance	IK10
Energy efficiency class	F (light source) in accordance with EU 2019/2015
Glow wire test	960°C
Maximum device temperature	55°C (Ta 25°C)
Appliance class	class III
Walkover	yes
Drive-over	up to 2000 kg
Power cables	includes 1.5 m neoprene cable H05RN-F 2x0.75/0.75 Ø6.3 mm
Protection systems	IPS (Intelligent Protection System)
Photobiological safety	in accordance with IEC TR 62778:2014
Notes	version with LED colour 2200K and honeycomb louvre available on request; Casambi control using the Casambi app with dedicated electronics

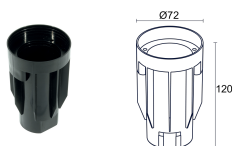
PHOTOMETRIC DATA

L - 41°

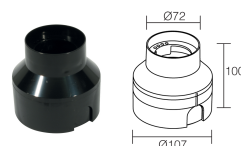


ACCESSORIES

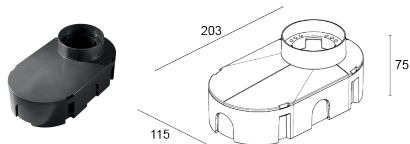
Installation Accessories



WC0100
Outer casing



WC0103
Outer casing

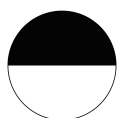


WC0150
Outer casing



WG0100
Retaining spring clip Ø70mm

Optical Accessories



WE0400S
Anti-glare screen, half transparent and half serigraphed black
built into the lighting fixture
Order together with the lighting fixture

L&L Luce&Light SRL reserves the right to change the information contained in this document at any time without prior notice being given.