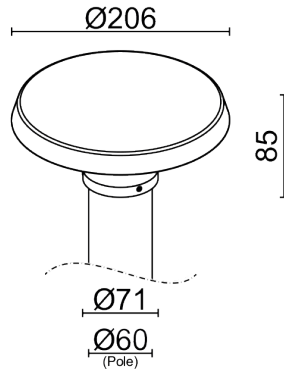
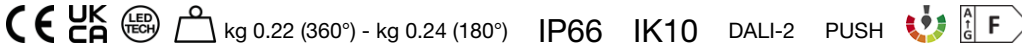


Made in Italy



Olo BLVD 1.0, code: LB10100D00NRAH
Urban lighting

16/05/2026 Rev. 18



DESCRIPTION

Urban lighting; pole mounted Ø60 mm, surface mounted (pole); Power consumption: 18W; Power supply: 110-230Vac; Lumen output at source: 2880lm (3000K, 18W); Delivered lumen output: 1820 lm (3000K, 180°, 18W); 72 mid-power LEDs, 3-step MacAdam, 60 000h L90 B10 (Ta 25°C); LED colour: 2200K; Optics: radial 180°; CRI Colour Rendering Index: 80; Body material: Head made of low-copper-content die-cast aluminium alloy EN AB 47100 for excellent resistance to corrosion.; Finishes: anthracite finish obtained through an initial treatment with a ceramic nanoparticle coating, to prepare for painting, followed by a coat of epoxy paint and one of polyester paint to provide corrosion resistance of more than 1500 hours of salt spray. Paints compliant with the Qualicoat standard used in the automotive sector; RAL finish on request; Screen material: screen made of optical grade polycarbonate with anti-UV coating, characterised by excellent resistance to impacts; Seals: the silicone rubber gaskets guarantee maximum resistance to UV rays and unchanging mechanical characteristics over time; built-in power supply unit; Control system: PUSH, DALI-2; Ingress protection: IP66; Impact resistance: IK10; Operating temperature: -20°C — +50°C; Photobiological safety: in accordance with IEC TR 62778:2014; Appliance class: class I; Weight: 220 g (360°) - 240 g (180°); Dimensions: Ø206x85 mm; Energy efficiency class: F (light source) in accordance with EU 2019/2015; Accessories: WDA29H Pole adapter ø 76 mm - anthracite, WFA02 IP68 “h”-type three-way connector (82x53.3x28 mm), WPA17H Pole ø 60 mm, WPA18H Pole ø 76 mm; tested and approved via E.O.L. (End Of Line) test with functioning test and check of electrical power consumption

Status: Available

ELECTRICAL CHARACTERISTICS

Power consumption	18W
Power supply	110-230Vac
Power supply unit	built-in power supply unit
Control system	PUSH, DALI-2

LIGHTING CHARACTERISTICS

Number and type of LED	72 mid-power LEDs
Average LED life	60 000h L90 B10 (Ta 25°C)
LED colour	2200K
CRI Colour Rendering Index	80
Binning	3-step MacAdam
Optics	radial 180°
Lumen output at source	2880lm (3000K, 18W)
Delivered lumen output	1820 lm (3000K, 180°, 18W)

MECHANICAL CHARACTERISTICS

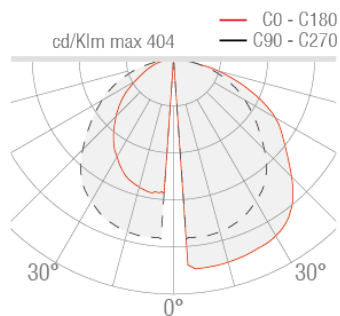
Dimensions	Ø206x85 mm
Weight	220 g (360°) - 240 g (180°)
Finishes	anthracite
Mounting	screw fastening system
Body material	die-cast aluminium
Screen material	screen in optical grade PC

GENERAL CHARACTERISTICS

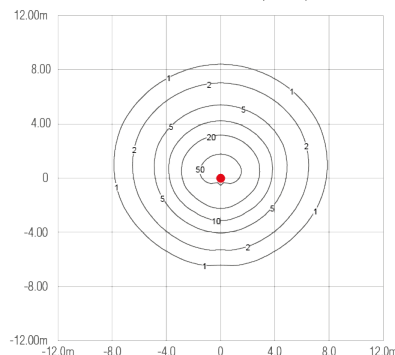
Ingress protection	IP66
Operating temperature	-20°C — +50°C
Impact resistance	IK10
Energy efficiency class	F (light source) in accordance with EU 2019/2015
Appliance class	class I
Walkover	no
Drive-over	no
Photobiological safety	in accordance with IEC TR 62778:2014

PHOTOMETRIC DATA

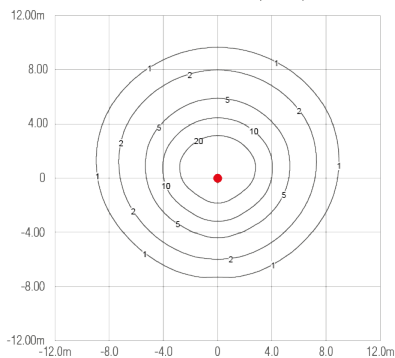
RA – Radiale 180°



RA - Radiale 180° / Radial 180° (H 3m) Isolux (3000K)

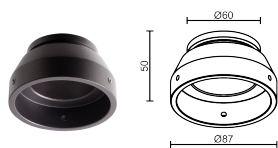


RA - Radiale 180° / Radial 180° (H 4m) Isolux (3000K)



ACCESSORIES

Other



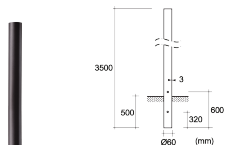
WDA29H

Pole adapter ø 76 mm - anthracite



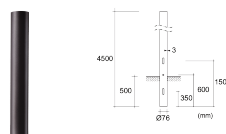
WFA02

IP68 "h"-type three-way connector (82x53.3x28 mm)
4-pin
IP68
82x53.3x28 mm



WPA17H

Pole ø 60 mm



WPA18H

Pole ø 76 mm

L&L Luce&Light SRL reserves the right to change the information contained in this document at any time without prior notice being given.