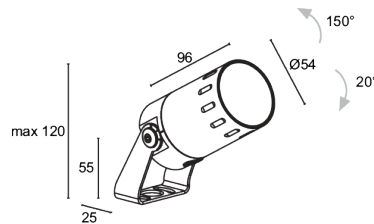


Made in Italy



Ginko 2.5, code: GN250010005R9H
Projectors for outdoor applications

17/06/2026 Rev. 34



DESCRIPTION

projector for outdoor applications; surface mounted (ceiling, wall, ground, spike); Power consumption: 7W; Power supply: 24Vdc; Lumen output at source: 583 lm (3000K); Delivered lumen output: 86 lm (3000K, Light Shaper); 1 COB LED, 2-step MacAdam, 61 000h L80 B10 (Ta 25°C); LED colour: 3000K; Optics: Light Shaper: optical system consisting of multiple lenses with focus adjustment, and movable fins to adjust the projected shape (from circle through to irregular quadrilaterals); CRI Colour Rendering Index: >90; Body material: body made of ANTICORODAL 6082 low-copper-content aluminium alloy for excellent resistance to corrosion, made entirely on a CNC lathe. Zoom ring made of ANTICORODAL 6082, sandblasted and electro-coloured black, and serigraphed with graduations. Bracket in AISI 316L stainless steel, tumble finished and painted; Finishes: anthracite finish obtained through an initial treatment with a ceramic nanoparticle coating, to prepare for painting, followed by a coat of epoxy paint and one of polyester paint to provide corrosion resistance of more than 1500 hours of salt spray. Paints compliant with the Qualicoat standard used in the automotive sector; RAL finish on request; Screen material: 4-mm-thick transparent extra-clear glass, with high transmittance to ensure chromatic uniformity of light and tempered for excellent resistance to knocks and scratches, with RAL 7015 grey vitrified serigraphy around the edge; power supply unit not included; Ingress protection: IP66; Impact resistance: IK07; version with bracket in customized height available on request; Casambi control using the Casambi app with dedicated electronics; Operating temperature: -20°C — +50°C; Glow wire test: 960°C; Photobiological safety: in accordance with IEC TR 62778:2014; Appliance class: class III; Weight: 570 g; Dimensions: Ø54x116x82 mm; Energy efficiency class: F (light source) in accordance with EU 2019/2015; Accessories: WB8012H Standard snoot - anthracite, WB8022H Asymmetrical snoot - anthracite, WF3301 Flexible cable-protection tube - 15 cm, WP0300 Spike for in-ground installation, WP1004 Fastener strap - 5 m, WP1006H Spike for in-ground installation - h 500 mm - anthracite, WP1007H Spike for in-ground installation - h 800 mm - anthracite; tested and approved via E.O.L. (End Of Line) test with functioning test and check of electrical power consumption

Status: Available

ELECTRICAL CHARACTERISTICS

Power consumption	7W
Power supply	24Vdc
Power supply unit	power supply unit not included

LIGHTING CHARACTERISTICS

Number and type of LED	1 COB LED
Average LED life	61 000h L80 B10 (Ta 25°C)
LED colour	3000K
CRI Colour Rendering Index	>90
Binning	2-step MacAdam
Optics	Light Shaper
Lumen output at source	583 lm (3000K)
Delivered lumen output	86 lm (3000K, Light Shaper)

MECHANICAL CHARACTERISTICS

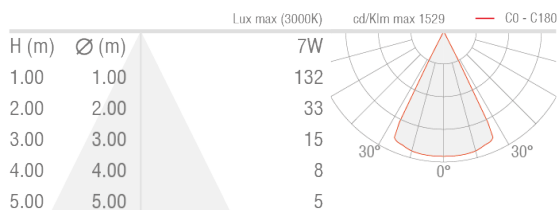
Dimensions	Ø54x116x82 mm
Weight	570 g
Finishes	anthracite
Mounting	with bracket, screws and plugs
Body material	body in anticorodal aluminium, AISI 316L stainless steel bracket
Screen material	screen in serigraphed-grey and transparent, tempered extra-clear glass

GENERAL CHARACTERISTICS

Ingress protection	IP66
Operating temperature	-20°C — +50°C
Impact resistance	IK07
Energy efficiency class	F (light source) in accordance with EU 2019/2015
Glow wire test	960°C
Appliance class	class III
Walkover	no
Drive-over	no
Photobiological safety	in accordance with IEC TR 62778:2014
Notes	version with bracket in customized height available on request; Casambi control using the Casambi app with dedicated electronics

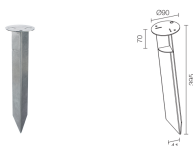
PHOTOMETRIC DATA

R9 - 53°

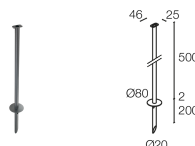


ACCESSORIES

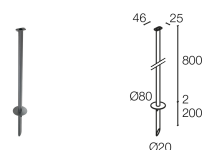
Installation Accessories



WP0300
Spike for in-ground installation



WP1006H
Spike for in-ground installation - h 500 mm - anthracite

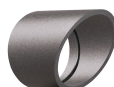


WP1007H
Spike for in-ground installation - h 800 mm - anthracite

Anti-glare



WB8012H
Standard snoot - anthracite



WB8022H
Asymmetrical snoot - anthracite

Other



WF3301



WP1004

Flexible cable-protection tube - 15 cm
Order together with the lighting fixture

Fastener strap - 5 m

L&L Luce&Light SRL reserves the right to change the information contained in this document at any time without prior notice being given.