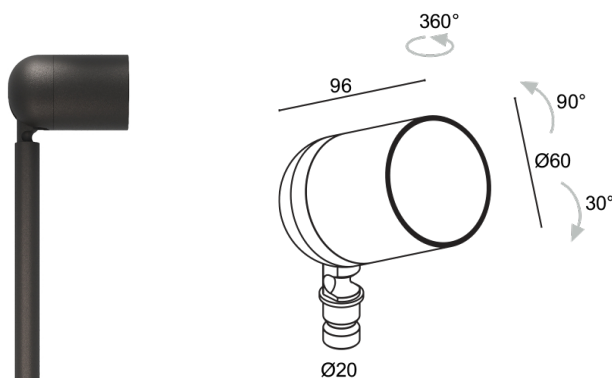


Made in Italy



Pivot 2.9, code: CP29000000050WH
Bollards for outdoor applications

01/05/2025 Rev. 02/2024



DESCRIPTION

bollard for outdoor applications; surface mounted (spike); Power consumption: 10W; Power supply: 24Vdc; Lumen output at source: 978 lm (3000K, 10W, CRI 80); Delivered lumen output: 835 lm (3000K, 25°, 10W, CRI 80); 1 COB LED, 3-step MacAdam, 50 000h L95 B10 (Ta 25°C); LED colour: 3000K; Optics: adjustable 13°x68°; CRI Colour Rendering Index: 80; Body material: body made of ANTICORODAL EN AW 6082 low-copper-content aluminium alloy for excellent resistance to corrosion, made entirely on a CNC lathe; Finishes: anthracite finish obtained through an initial treatment with a ceramic nanoparticle coating, to prepare for painting, followed by a coat of epoxy paint and one of polyester paint to provide corrosion resistance of more than 1000 hours of salt spray; RAL finish on request; Screen material: 3-mm-thick transparent extra-clear glass with vitrified serigraphy, high transmittance to ensure chromatic uniformity of light and tempered for excellent resistance to knocks and scratches; Seals: The NBR nitrile rubber O-rings ensure the fixture's IP rating is preserved, guaranteeing continued protection; Installation: Two installation options: spike with single lighting fixture, or spike with additional arm for a second lighting fixture. The pivot at the base of the lighting fixture enables great flexibility in aiming the light output.; power supply unit not included; includes 1.50 m neoprene cable, H05RN-F 2x0,35/0,75 Ø6,3 mm; Ingress protection: IP66; Impact resistance: IK08; Casambi control using the Casambi app with dedicated electronics; Protection systems: IPS (Intelligent Protection System) protects lighting fixtures from water infiltrations, which can occur if there are faulty junctions between the cables in outdoor or underwater applications. This innovation, patented by L&L, also guarantees electrical protection against polarity reversal, hot plugging, ESD and power surges, which can occur if there are faults in the electrical circuit; Operating temperature: -20°C — +45°C; Glow wire test: 960°C; Photobiological safety: photobiological safety: risk group 1 according to EN 62471:2006; Appliance class: class III; Weight: 560 g; Dimensions: Ø60x96 mm; Energy efficiency class: F (light source) in accordance with EU 2019/2015; Accessories: WB1001H Standard snoot - anthracite, WB1002H Asymmetrical snoot - anthracite, WPA00H Spike for in-ground installation - h 500 mm - anthracite, WPA01H Spike for in-ground installation - h 800 mm - anthracite, WPA02H Spike for in-ground installation - h 1100 mm - anthracite, WPA03H Dual-fixture spike for in-ground installation - h 500 mm - anthracite, WPA04H Dual-fixture spike for in-ground installation - h 800 mm - anthracite, WPA11H Dual-fixture spike for in-ground installation - h 1100 mm - anthracite; tested and approved via E.O.L. (End Of Line) test with functioning test and check of electrical power consumption

Status: Available

ELECTRICAL CHARACTERISTICS

Power consumption	10W
Power supply	24Vdc
Power supply unit	power supply unit not included

LIGHTING CHARACTERISTICS

Number and type of LED	1 COB LED
Average LED life	50 000h L95 B10 (Ta 25°C)
LED colour	3000K
CRI Colour Rendering Index	80
Binning	3-step MacAdam
Optics	adjustable 13°x68°
Lumen output at source	978 lm (3000K, 10W, CRI 80)
Delivered lumen output	835 lm (3000K, 25°, 10W, CRI 80)

MECHANICAL CHARACTERISTICS

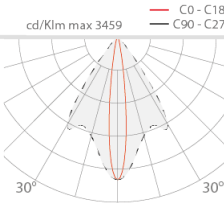
Dimensions	Ø60x96 mm
Weight	560 g
Finishes	anthracite
Body material	body in anticorodal aluminium
Screen material	screen in serigraphed, transparent, tempered extra-clear glass

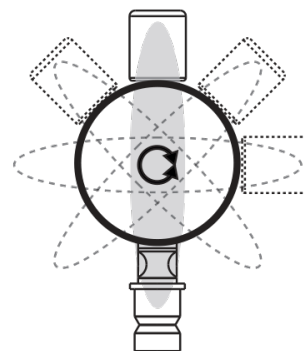
GENERAL CHARACTERISTICS

Ingress protection	IP66
Operating temperature	-20°C — +45°C
Impact resistance	IK08
Energy efficiency class	F (light source) in accordance with EU 2019/2015
Glow wire test	960°C
Appliance class	class III
Walkover	no
Drive-over	no
Power cables	includes 1.50 m neoprene cable, H05RN-F 2x0,35/0,75 Ø6,3 mm
Protection systems	IPS (Intelligent Protection System)
Photobiological safety	photobiological safety: risk group 1 according to EN 62471:2006
Notes	Casambi control using the Casambi app with dedicated electronics

PHOTOMETRIC DATA

W – 13°x68° CRI80

H (m)	Ø (m)	Ø (m)	Lux max (3000K)		cd/Klm max 3459
			10W	14W	
1.00	0.23	1.34	2425	3089	
2.00	0.47	2.68	606	772	
3.00	0.70	4.03	269	343	
4.00	0.94	5.37	152	193	
5.00	1.17	6.71	97	124	



13°x68°

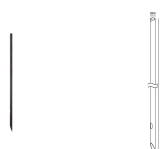
ACCESSORIES

Installation Accessories



WPA00H

Spike for in-ground installation - h 500 mm - anthracite
 Order together with the lighting fixture
 Required installation accessories, not included



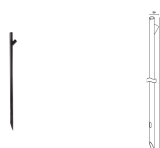
WPA01H

Spike for in-ground installation - h 800 mm - anthracite
 Order together with the lighting fixture
 Required installation accessories, not included



WPA02H

Spike for in-ground installation - h 1100 mm - anthracite
 Order together with the lighting fixture
 Required installation accessories, not included



WPA03H

Dual-fixture spike for in-ground installation - h 500 mm - anthracite
 Order together with two lighting fixtures
 Required installation accessories, not included



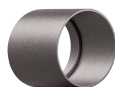
WPA04H

Dual-fixture spike for in-ground installation - h 800 mm - anthracite
 Order together with two lighting fixtures
 Required installation accessories, not included

WPA11H

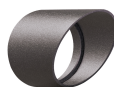
Dual-fixture spike for in-ground installation - h 1100 mm - anthracite
 Order together with two lighting fixtures
 Required installation accessories, not included

Anti-glare



WB1001H

Standard snoot - anthracite



WB1002H

Asymmetrical snoot - anthracite

L&L Luce&Light SRL reserves the right to change the information contained in this document at any time without prior notice being given.