

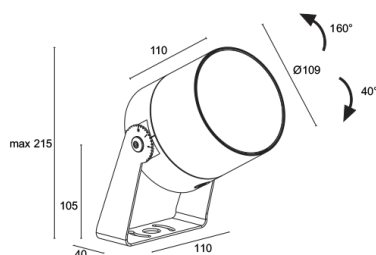
Made in Italy



Ginko 4.0, code: GN40001001F0L5

Projectors for outdoor applications

13/07/2025 Rev. 09/2024



DESCRIPTION

projector for outdoor applications; surface mounted (ceiling, wall, ground, spike); Power consumption: 25W; Power supply: 24Vdc; Lumen output at source: 1860 lm (3000K, CRI >90); Delivered lumen output: 1724 lm (3000K, 12°, CRI >90); 1 high power density COB LED, 2-step MacAdam, 50 000h L95 B10 (Ta 25°C); LED colour: 2700K; Optics: 34°: optical system consisting of a high-efficiency, deep-set TIR lens combined with a high-quality technical filter; CRI Colour Rendering Index: >90; Body material: body made of ANTICORODAL 6082 low-copper-content aluminium alloy for excellent resistance to corrosion, made entirely on a CNC lathe. Bracket in AISI 316L stainless steel, tumble finished and painted; Finishes: jasper green finish obtained through an initial treatment with a ceramic nanoparticle coating, to prepare for painting, followed by a coat of epoxy paint and one of polyester paint to provide corrosion resistance of more than 1500 hours of salt spray. Paints compliant with the Qualicoat standard used in the automotive sector; RAL finish on request; Screen material: 5-mm-thick transparent extra-clear glass, with high transmittance to ensure chromatic uniformity of light and tempered for excellent resistance to knocks and scratches, with RAL 7015 grey vitrified serigraphy around the edge; Installation: body can be tilted along the horizontal axis by 190°; power supply unit not included; includes 1.50 m neoprene cable H05RN-F 2x0.75/0.75 Ø6.3 mm; Ingress protection: IP66, IP69; Impact resistance: IK08; 13°x65°, 24°x69° optics adjustable through 360° using the magnet provided; version with bracket in customized height available on request; version in brass available on request; Casambi control using the Casambi app with dedicated electronics; Protection systems: IPS (Intelligent Protection System) protects lighting fixtures from water infiltrations, which can occur if there are faulty junctions between the cables in outdoor or underwater applications. This innovation, patented by L&L, also guarantees electrical protection against polarity reversal, hot plugging, ESD and power surges, which can occur if there are faults in the electrical circuit; Operating temperature: -20°C — +45°C; Glow wire test: 960°C; Photobiological safety: in accordance with IEC TR 62778:2014; Appliance class: class III; Weight: 2100 g; Dimensions: Ø109x110 mm; Energy efficiency class: F (light source) in accordance with EU 2019/2015; Accessories: honeycomb louvre, WB11015 Standard snoot - jasper green, WB1101N Standard snoot - black, WB11025 Asymmetrical snoot - jasper green, WB1102N Asymmetrical snoot - black, WP0300 Spike for in-ground installation; tested and approved via E.O.L. (End Of Line) test with functioning test and check of electrical power consumption

Status: Available

ELECTRICAL CHARACTERISTICS

Power consumption	25W
Power supply	24Vdc
Power supply unit	power supply unit not included

LIGHTING CHARACTERISTICS

Number and type of LED	1 high power density COB LED
Average LED life	50 000h L95 B10 (Ta 25°C)
LED colour	2700K
CRI Colour Rendering Index	>90
Binning	2-step MacAdam
Optics	34°
Lumen output at source	1860 lm (3000K, CRI >90)
Delivered lumen output	1724 lm (3000K, 12°, CRI >90)

MECHANICAL CHARACTERISTICS

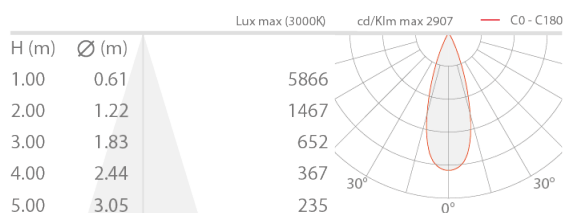
Dimensions	Ø109x110 mm
Weight	2100 g
Finishes	jasper green
Mounting	with bracket, screws and plugs
Body material	body in anticorodal aluminium, AISI 316L stainless steel bracket
Screen material	screen in serigraphed-grey and transparent, tempered extra-clear glass

GENERAL CHARACTERISTICS

Ingress protection	IP66, IP69
Operating temperature	-20°C — +45°C
Impact resistance	IK08
Features	13°x65°, 24°x69° optics adjustable through 360° using the magnet provided
Energy efficiency class	F (light source) in accordance with EU 2019/2015
Glow wire test	960°C
Appliance class	class III
Walkover	no
Drive-over	no
Power cables	includes 1.50 m neoprene cable H05RN-F 2x0.75/0.75 Ø6.3 mm
Protection systems	IPS (Intelligent Protection System)
Photobiological safety	in accordance with IEC TR 62778:2014
Notes	version with bracket in customized height available on request; version in brass available on request; Casambi control using the Casambi app with dedicated electronics

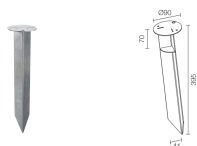
PHOTOMETRIC DATA

L – 34° CRI80



ACCESSORIES

Installation Accessories



WP0300

Spike for in-ground installation

Anti-glare

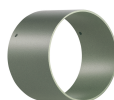


honeycomb louvre

built into the lighting fixture

The honeycomb louvre can be fitted on all optics, except for 38° sharp, 13°x65°, 24°x69° optics

Add the optical accessory in the code generator



WB11015

Standard snout - jasper green



WB1101N

Standard snout - black



WB11025

Asymmetrical snout - jasper green



WB1102N

Asymmetrical snoot - black

L&L Luce&Light SRL reserves the right to change the information contained in this document at any time without prior notice being given.