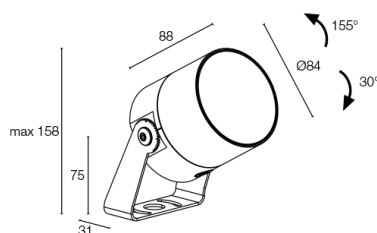
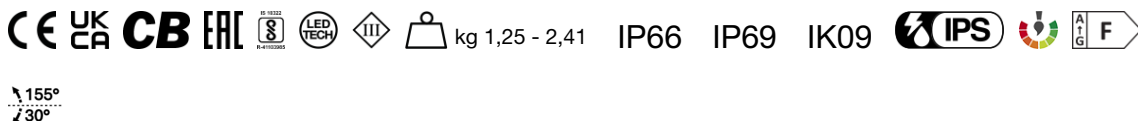


Made in Italy



Ginko 3.0, code: GN300119P5-1
Projectors for outdoor applications

04/02/2026 Rev. 14/2024



DESCRIPTION

projector for outdoor applications; surface mounted (ceiling, wall, ground, spike); Power consumption: 15W; Power supply: 24Vdc; Lumen output at source: 1343 lm (3000K, 15W, CRI >90); Delivered lumen output: 945 lm (3000K, 42°, 15W, CRI >90); 1 high power density COB LED, 2-step MacAdam, 50 000h L95 B10 (Ta 25°C); LED colour: 4000K; Optics: sharp 48° SHARP optical system consisting of a plano-convex lens for an extremely well-defined light beam, combined with a high-quality technical filter; CRI Colour Rendering Index: >90; Body material: body made of ANTICORODAL 6082 low-copper-content aluminium alloy for excellent resistance to corrosion, made entirely on a CNC lathe. Bracket in AISI 316L stainless steel, tumble finished and painted; Finishes: jasper green finish obtained through an initial treatment with a ceramic nanoparticle coating, to prepare for painting, followed by a coat of epoxy paint and one of polyester paint to provide corrosion resistance of more than 1500 hours of salt spray. Paints compliant with the Qualicoat standard used in the automotive sector; RAL finish on request; Screen material: 4-mm-thick transparent extra-clear glass, with high transmittance to ensure chromatic uniformity of light and tempered for excellent resistance to knocks and scratches, with RAL 7015 grey vitrified serigraphy around the edge; power supply unit not included; includes 5 m neoprene cable H05RN-F 2x0.75/0.75 Ø6.3 mm; Ingress protection: IP66, IP69; Impact resistance: IK09; 12°x64°, 28°x72° optics and shadow-effect filter, adjustable through 360° using the magnet provided; version with bracket in customized height available on request; version in brass available on request; Casambi control using the Casambi app with dedicated electronics; Protection systems: IPS (Intelligent Protection System) protects lighting fixtures from water infiltrations, which can occur if there are faulty junctions between the cables in outdoor or underwater applications. This innovation, patented by L&L, also guarantees electrical protection against polarity reversal, hot plugging, ESD and power surges, which can occur if there are faults in the electrical circuit; Operating temperature: -20°C — +45°C; Glow wire test: 960°C; Photobiological safety: in accordance with IEC TR 62778:2014; Appliance class: class III; Weight: 1250 g, stainless steel: 2405 g; Dimensions: Ø84x88 mm; Energy efficiency class: F (light source) in accordance with EU 2019/2015; Accessories: WB80105 Standard snoot - jasper green, WB8010N Standard snoot - black anodized, WB80205 Asymmetrical snoot - jasper green, WP0100 Spike for in-ground installation, WP1004 Fastener strap - 5 m, WP10065 Spike for in-ground installation - h 500 mm - jasper green, WP10075 Spike for in-ground installation - h 800 mm - jasper green, WR8000 Shadow-effect filter; tested and approved via E.O.L. (End Of Line) test with functioning test and check of electrical power consumption

Status: Available

ELECTRICAL CHARACTERISTICS

Power consumption	15W
Power supply	24Vdc
Power supply unit	power supply unit not included

LIGHTING CHARACTERISTICS

Number and type of LED	1 high power density COB LED
Average LED life	50 000h L95 B10 (Ta 25°C)
LED colour	4000K
CRI Colour Rendering Index	>90
Binning	2-step MacAdam
Optics	sharp 48°
Lumen output at source	1343 lm (3000K, 15W, CRI >90)
Delivered lumen output	945 lm (3000K, 42°, 15W, CRI >90)

MECHANICAL CHARACTERISTICS

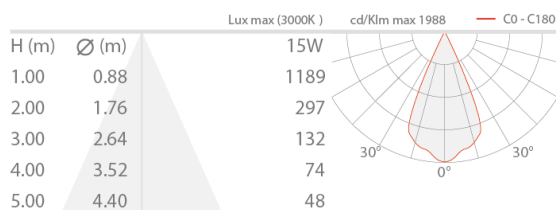
Dimensions	Ø84x88 mm
Weight	1250 g, stainless steel: 2405 g
Finishes	jasper green
Mounting	with bracket, screws and plugs
Body material	body in anticorodal aluminium, AISI 316L stainless steel bracket
Screen material	screen in serigraphed-grey and transparent, tempered extra-clear glass

GENERAL CHARACTERISTICS

Ingress protection	IP66, IP69
Operating temperature	-20°C — +45°C
Impact resistance	IK09
Features	12°x64°, 28°x72° optics and shadow-effect filter, adjustable through 360° using the magnet provided
Energy efficiency class	F (light source) in accordance with EU 2019/2015
Glow wire test	960°C
Appliance class	class III
Walkover	no
Drive-over	no
Power cables	includes 5 m neoprene cable H05RN-F 2x0.75/0.75 Ø6.3 mm
Protection systems	IPS (Intelligent Protection System)
Photobiological safety	in accordance with IEC TR 62778:2014
Notes	version with bracket in customized height available on request; version in brass available on request; Casambi control using the Casambi app with dedicated electronics

PHOTOMETRIC DATA

P - 48° sharp CRI 80



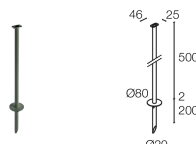
ACCESSORIES

Installation Accessories



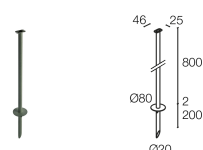
WP0100

Spike for in-ground installation



WP10065

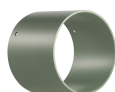
Spike for in-ground installation - h 500 mm - jasper green



WP10075

Spike for in-ground installation - h 800 mm - jasper green

Anti-glare



WB80105

Standard snoot - jasper green



WB8010N

Standard snoot - black anodized



WB80205

Asymmetrical snoot - jasper green

Optical Accessories



WR8000

Shadow-effect filter
built into the lighting fixture

the shadow-effect filter can be fitted to the 48° sharp optics
Order together with the lighting fixture

Other



WP1004

Fastener strap - 5 m

L&L Luce&Light SRL reserves the right to change the information contained in this document at any time without prior notice being given.