

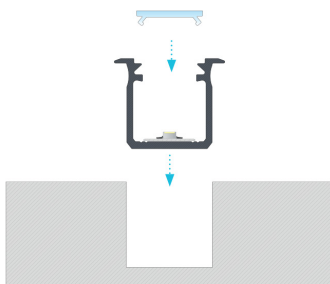
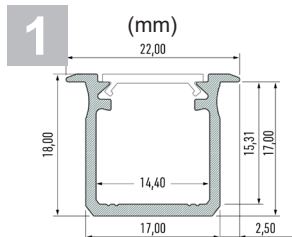
**WDA09 (2000 mm) - WDA10 (3000 mm)**

Accessories / Accessori



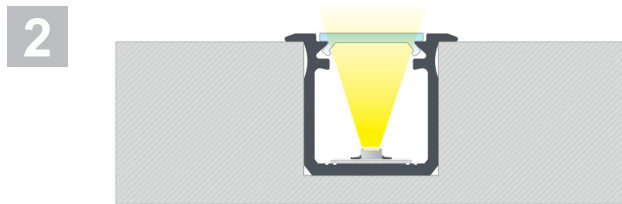
L&L Luce&Light reserves the right to change the information contained in this document at any time without prior notice being given.  
*Le informazioni contenute nel presente documento possono essere modificate in qualsiasi momento senza preavviso e non comportano l'assunzione, nemmeno implicita, di alcuna obbligazione da parte della L&L Luce&Light srl.*

**INSTALLATION DIAGRAMS / DIAGRAMMI DI INSTALLAZIONE**



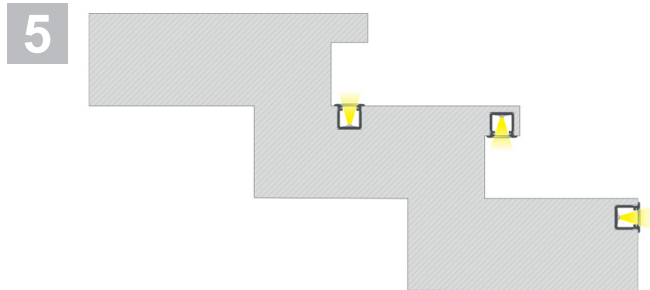
Installation instruction for recessed profile WDA09-10 with [WDA09: WR0000S1T or WR0000S1S or WR0000S1M (2000 mm), WDA10: WR0000S2T or WR0000S2S or WR0000S2M (3000 mm)] cover.

*Istruzioni di montaggio del profilo WDA09-10 a inserimento con diffusore [WDA09: WR0000S1T o WR0000S1S o WR0000S1M (2000 mm), WDA10: WR0000S2T o WR0000S2S o WR0000S2M (3000 mm)].*



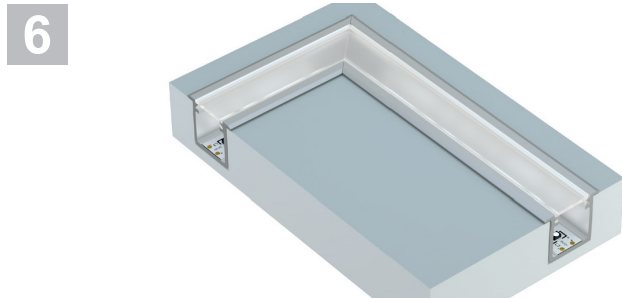
The end result of installation of recessed profile WDA09-10 with cover.

*Effetto finale del montaggio del profilo WDA09-10 a inserimento con diffusore.*



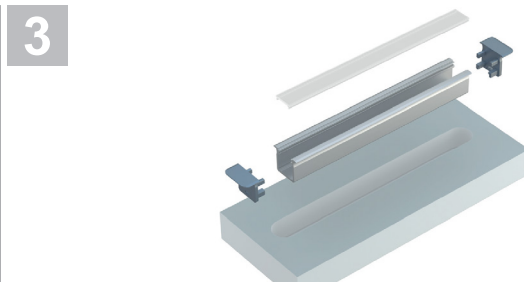
Methods of installing profile WDA09-10 inside milled groove using stairs as an example.

*Metodi di montaggio del profilo WDA09-10 all'interno dei fori fresati in base all'esempio delle scale.*



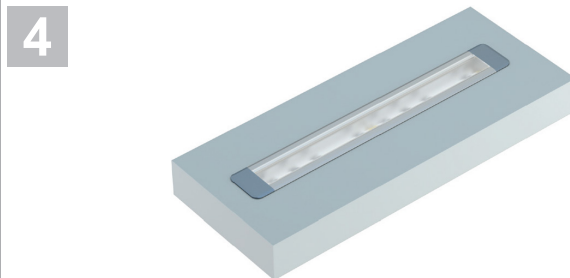
Connecting profiles WDA09-10 with cover at 90° in plasterboard.

*Collegamento dei profili WDA09-10 con diffusore con angolo di 90 gradi in pannello di gesso.*



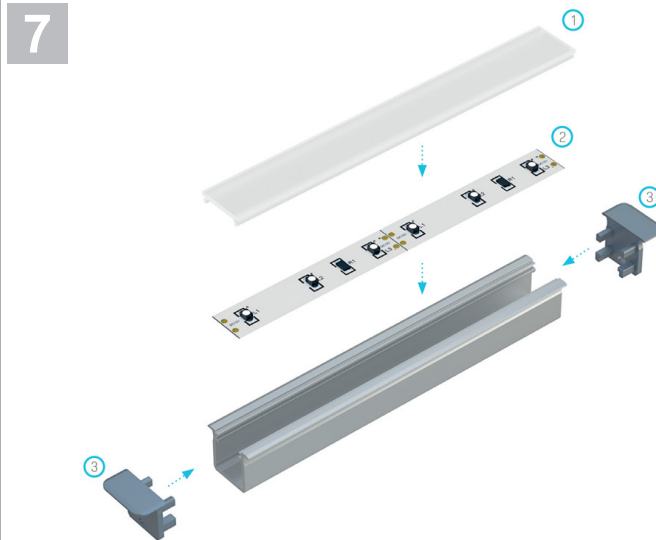
Isometric view before mounting profile WDA09-10 inside a milled groove with cover and end caps.

*Proiezione assometrica prima del montaggio del profilo WDA09-10 all'interno del foro fresato con diffusore e tappi laterali.*



The end result of installation of recessed profile WDA09-10 with cover in a plasterboard.

*Effetto finale del montaggio del profilo WDA09-10 a inserimento con diffusore in pannello di cartongesso.*



Assembly schematic for the elements of the lighting system using recessed profile WDA09-10 and (1) [WDA09: WR0000S1T or WR0000S1S or WR0000S1M (2000 mm), WDA10: WR0000S2T or WR0000S2S or WR0000S2M (3000 mm)] cover, (2) a LED strip, (3) an end cap with hole WEA09.

*Schema di montaggio degli elementi del sistema di illuminazione con l'uso del profilo WDA09-10 e (1) del diffusore [WDA09: WR0000S1T o WR0000S1S o WR0000S1M (2000 mm), WDA10: WR0000S2T o WR0000S2S o WR0000S2M (3000 mm)], (2) della striscia LED, (3) del tappo con foro WEA09.*