



TOUCH03L1

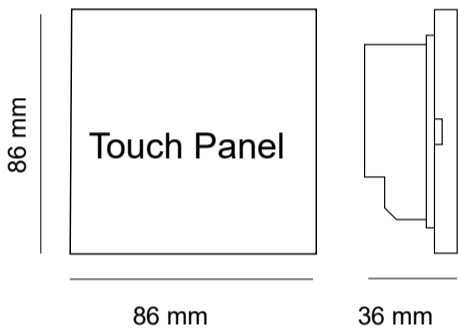
Power supply units and control gears - Alimentatori ed elettronica di controllo



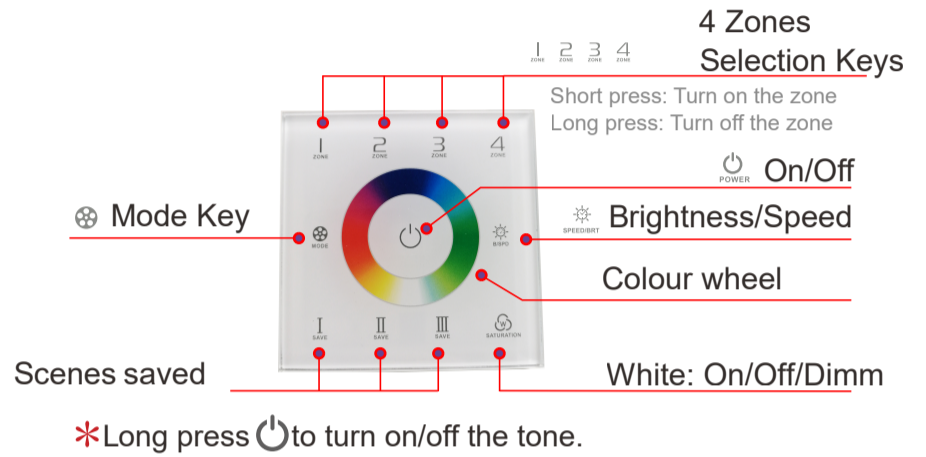
Technical specs:

TOUCH 03L1 RGBW Touch Panel - 4 zones

- Input Voltage: 100~240Vac
- Output Signal: DMX512 (4 zones)
- Working Temp.: -30°C ~55°C
- Dimensions: L86×W86×H36(mm)
- Weight(G.W.): 225g



Functions:



Changing Mode

1. Static Red
2. Static Green
3. Static Blue
4. Static Yellow
5. Static Purple
6. Static Cyan
7. Static White
8. RGB Jumping
9. 7 Colors Jumping
10. RGB Smooth
11. Full Colors Smooth
12. Static dark

DMX512 addresses:

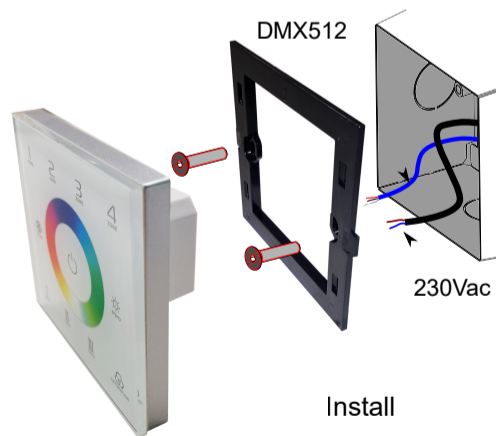
- Zone 1: adrss 1/2/3/4
- Zone 2: adrss 5/6/7/8
- Zone 3: adrss 9/10/11/12
- Zone 4: adrss 13/14/15/16

Installation Instruction:

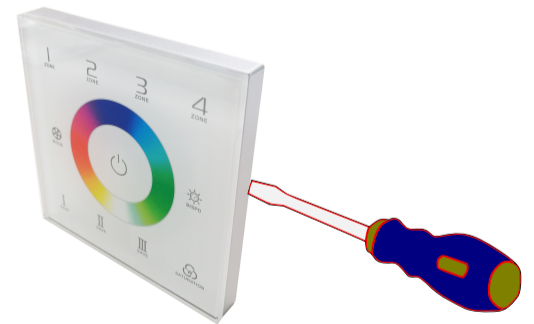
90x90x50 mm



Required outer casing, not included
WC0302

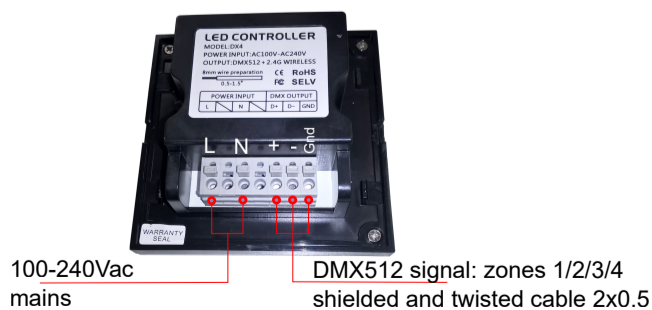


Install



Uninstall

Connection:





TOUCH 03 L1

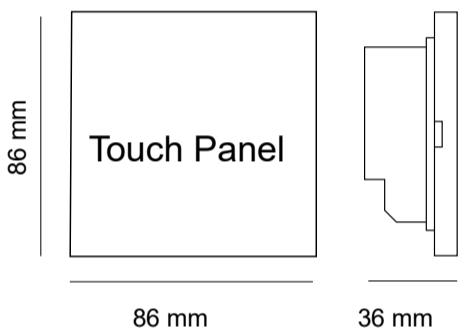
Power supply units and control gears - Alimentatori ed elettronica di controllo



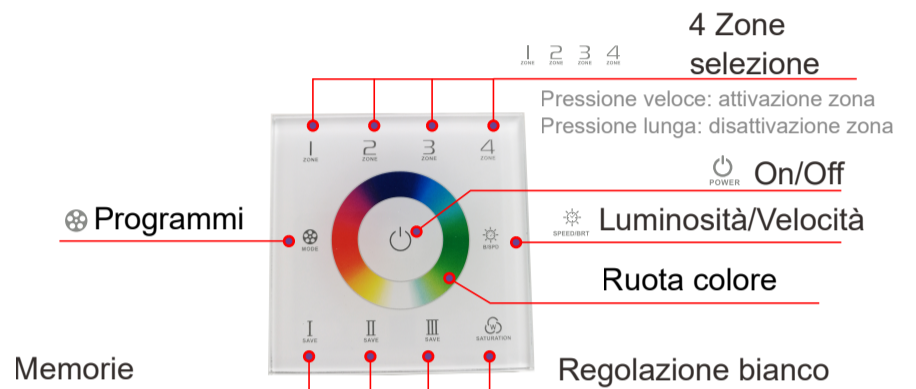
Dati tecnici:

TOUCH 03L1 RGBW Touch Panel - 4 zone

Input:	100~240Vac
Segnale uscita:	DMX512 (4 zone)
Temp.funzionamento:	-30°C ~55°C
Dimensioni:	L86×W86×H36(mm)
Peso:	225g



Funzioni:



* Pressione prolungata per spegnere i toni pulsante

Programmi:

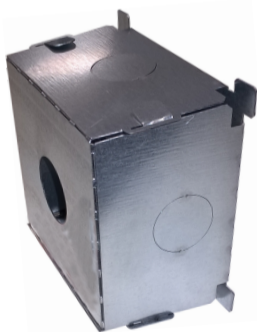
1. Rosso
2. Verde
3. Blue
4. Giallo
5. Rosa
6. Ciano
7. Bianco R+G+B
8. RGB Jumping
9. Cambio 7 colori a salto
10. Variazione RGB morbida
11. Cambio 7 colori morbido
12. Spento RGB

Indirizzi DMX512:

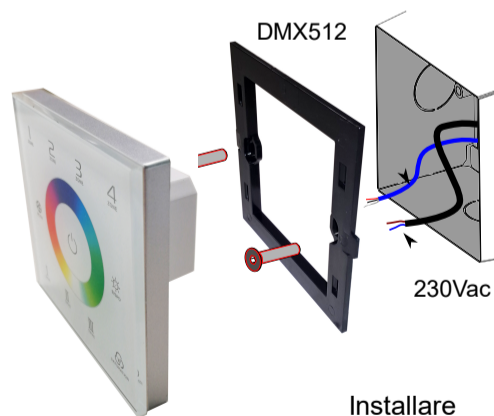
- Zona 1: adrss 1/2/3/4
- Zona 2: adrss 5/6/7/8
- Zona 3: adrss 9/10/11/12
- Zona 4: adrss 13/14/15/16

Installazione:

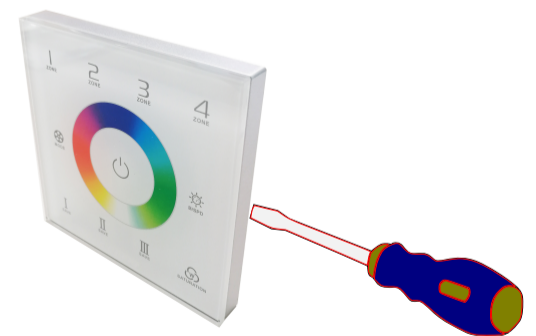
90x90x50 mm



Cassaforma non inclusa obbligatoria
WC0302



Installare



Disinstallare

Connessione:

