



TOUCH 02 L1

Power supply units and control gears - Alimentatori ed elettronica di controllo

Technical specs:

TOUCH 02L1 RGBW Touch Panel

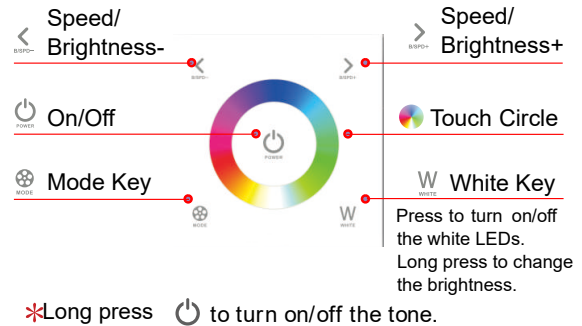
- Input Voltage: 100~240Vac
- Output Signal: DMX512
- Working Temp.: -30°C ~55°C
- Dimensions: L86×W86×H36 (mm)
- Weight(G.W.): 225g

Changing Mode Key

1. Static Red
2. Static Green
3. Static Blue
4. Static Yellow
5. Static Purple
6. Static Cyan
7. Static White
8. RGB Jumping
9. 7 Colors Jumping
10. RGB Smooth
11. 7 Colors Smooth
12. Static Black (only turn off RGB)

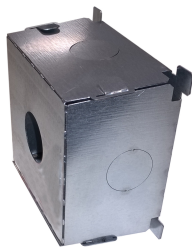
DMX512 addresses:
Zone 1: adrss 1/2/3/4

Functions:

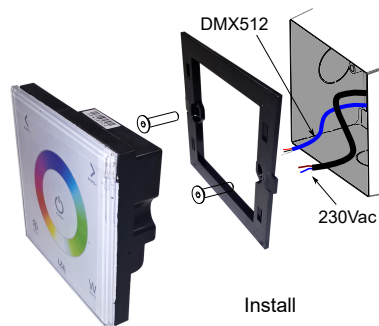


Installation Instruction:

90x90x50 mm



compulsory outercasing
WC0302



Install



Uninstall

Connection:



100-240Vac mains DMX512 signal: zona 1 shielded and twisted cable 2x0.5



TOUCH 02 L1

Power supply units and control gears - Alimentatori ed elettronica di controllo

Dati tecnici:

TOUCH 02L1 RGBW Touch Panel

Input: 100~240Vac
 Segnale uscita: DMX512
 Temp.funzionamento: -30°C ~55°C
 Dimensioni: L86×W86×H36(mm)
 Peso: 225g

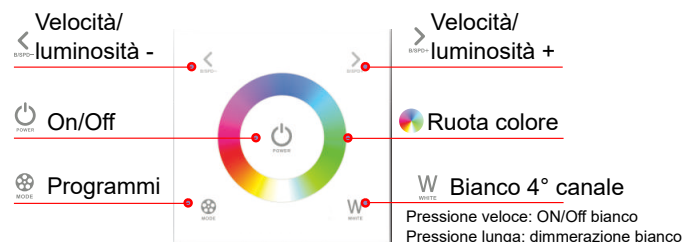
Programmi:

1. Rosso
2. Verde
3. Blue
4. Giallo
5. Rosa
6. Ciano
7. Bianco R+G+B
8. RGB Jumping
9. Cambio 7 colori a salto
10. Variazione RGB morbida
11. Cambio 7 colori morbido
12. Spegnimento R+G+B (uso bianco 4° ch)

Indirizzi DMX512:

Zona 1: adrsss 1/2/3/4

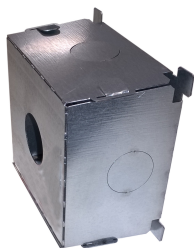
Funzioni:



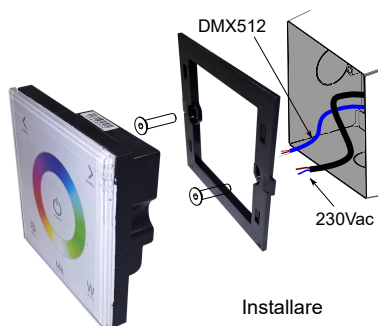
* Pressione prolungata per spegnere i toni pulsante

Installazione:

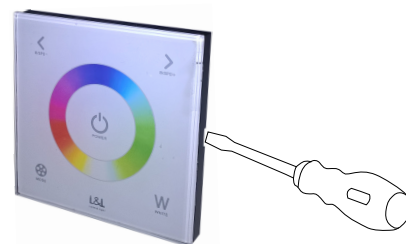
90x90x50 mm



cassaforma obbligatoria
WC0302



Installare



Disinstallare

Connessione:



100-240Vac
 Alimentazione

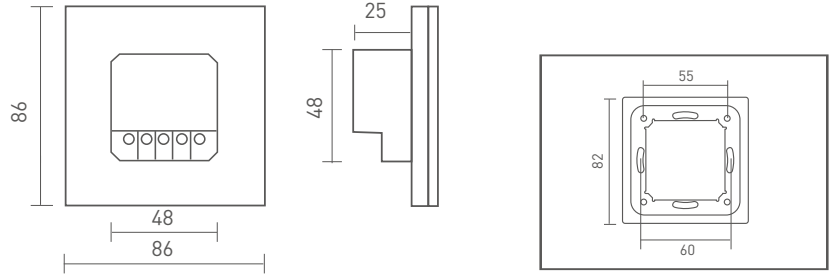
Segnale DMX512: zona 1
 usare cavo schermato 2x0.5



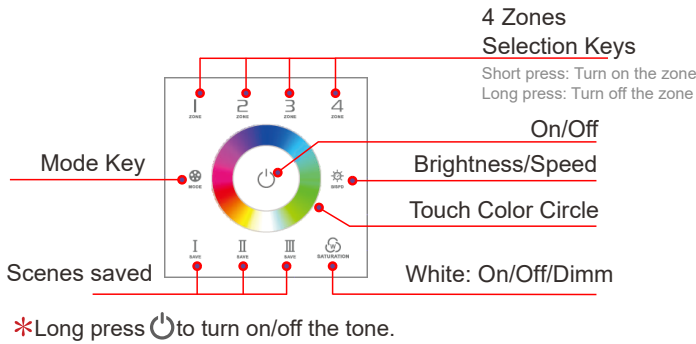
Technical specs:

TOUCH 03L1 RGBW Touch Panel - 4 zones

Input Voltage: 100~240Vac
 Output Signal: DMX512 (4 zones)
 Working Temp.: -30°C ~55°C
 Dimensions: L86×W86×H36(mm)
 Weight(G.W.): 225g



Functions:



Changing Mode Key

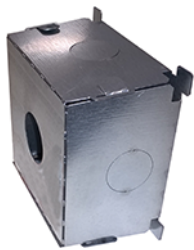
1. Static Red
2. Static Green
3. Static Blue
4. Static Yellow
5. Static Purple
6. Static Cyan
7. Static White
8. RGB Jumping
9. 7 Colors Jumping
10. RGB Smooth
11. Full Colors Smooth
12. Static dark

DMX512 addresses:

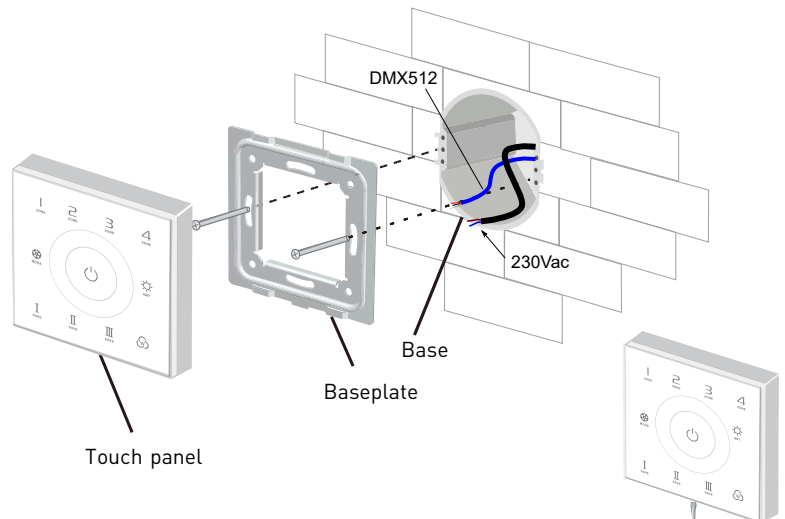
- Zone 1: adrss 1/2/3/4
- Zone 2: adrss 5/6/7/8
- Zone 3: adrss 9/10/11/12
- Zone 4: adrss 13/14/15/16

Installation Instruction:

90x90x50 mm

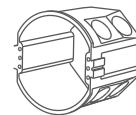
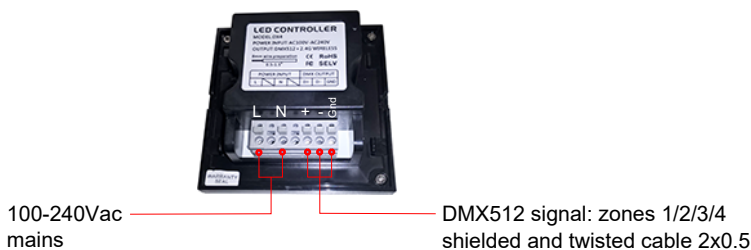


compulsory outercasing WC0302

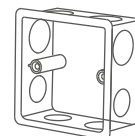


Uninstall

Connection:



European style



86 size